

Projecting Your Laptop Screen with WIFI

Projecting with Wifi

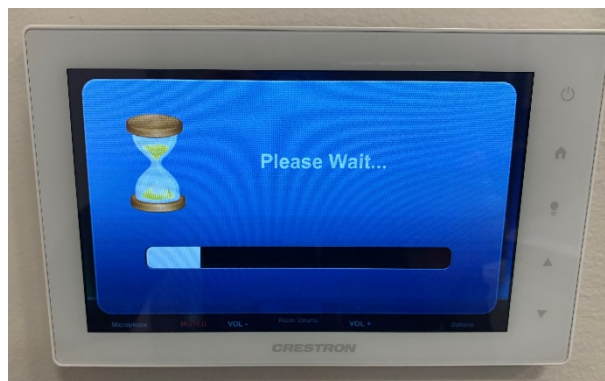
Devices you wish to project must be connected to the conference room wifi.

Use the Command Screen in the front right corner to control room features.

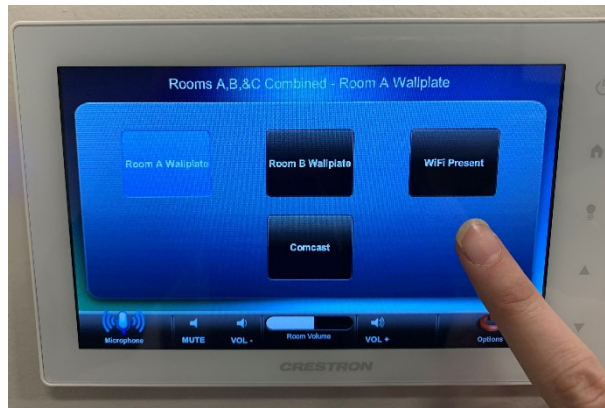


You may select one or both rooms at a time. To utilize both projectors and screens, the wall between Room A & Room B must be open.

Select the desired room(s). A loading screen will appear on the wallplate. The projector screen(s) at the front of the room and the projector(s) will turn on.



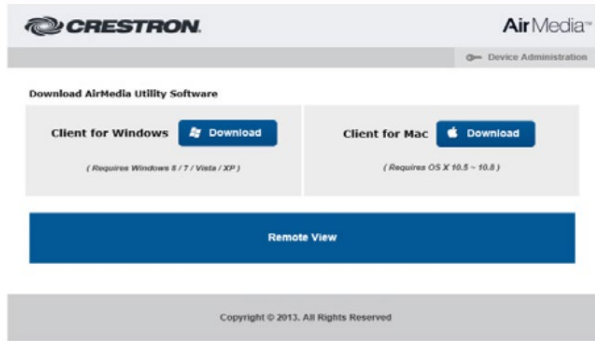
Once the wallplate is done loading, select 'Wifi Present'. (Please ensure that your device is connected to the conference room wifi)



The projector screen's display will change to the AirMedia screen. Open a web browser and type **the numbers only** into the address bar.



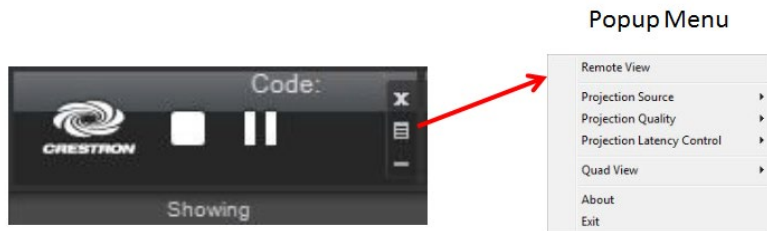
The web browser will redirect you to a download screen. Please download the appropriate software for the appropriate device by clicking 'Download'.



Once the software has downloaded, you will be asked for a code. Refer back to the projection screen for the code.



You should now see your laptop/computer screen projected. You may use the menu option on the control screen to change the settings.



- Stop showing the computer's screen.
- ▶ Start showing the computer's screen.
- || Freeze the computer's screen.
- X Close client application and the connection between the computer and the AM-100.
- ☰ Display a popup menu of additional options.
- Minimizes the *Presentation Control* screen.

You are now ready to begin your presentation.

Projecting Your Laptop Screen with Cords

Projecting your laptop screen with VGA or HDMI cords may be necessary for clients with strong firewalls or clients who are unable to download the Crestron Air Media software to their computer.

Both VGA and HDMI cords are available in the Conference Room podium.



HDMI



VGA



Once the laptop is connected the screen will begin projecting.